

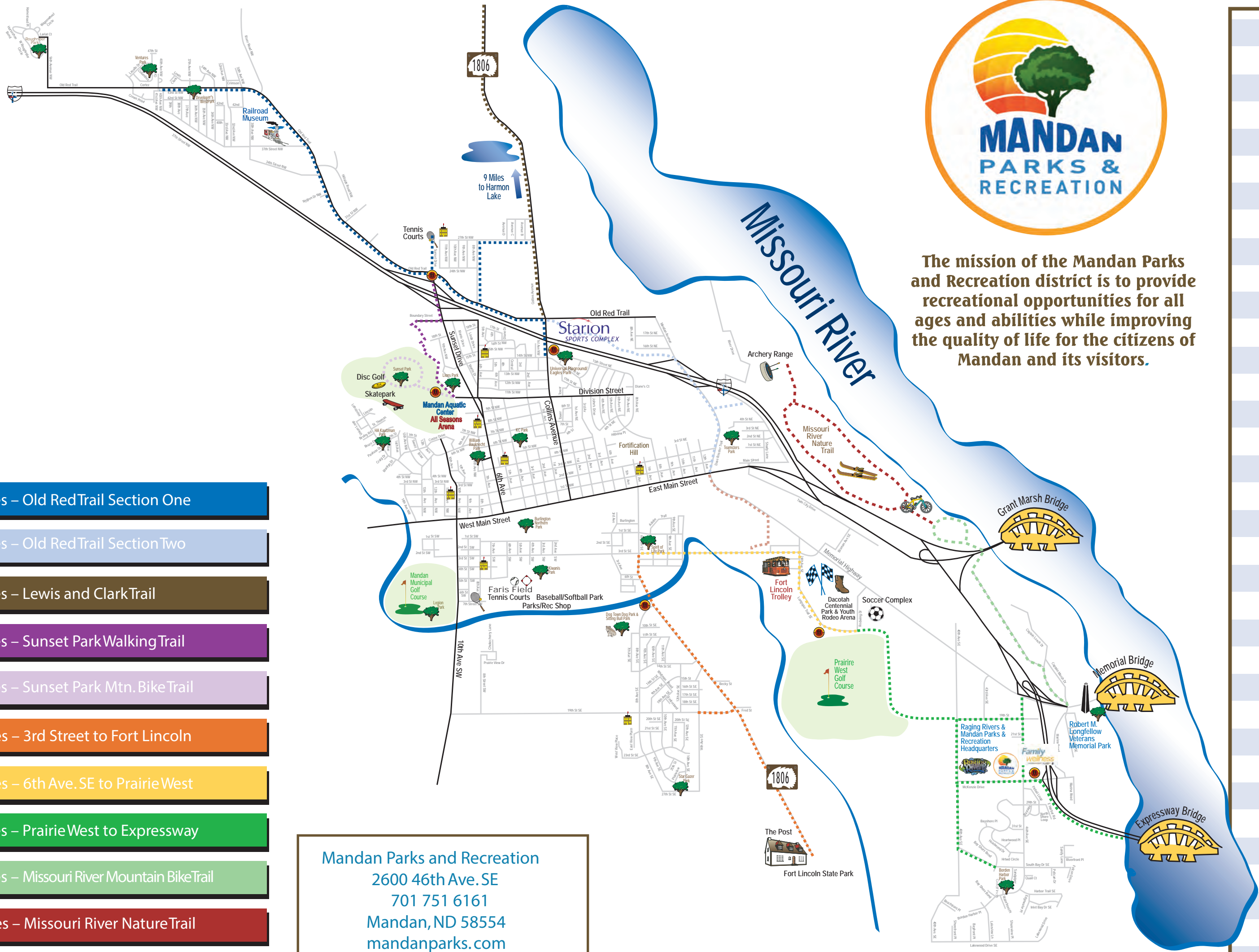


The mission of the Mandan Parks and Recreation district is to provide recreational opportunities for all ages and abilities while improving the quality of life for the citizens of Mandan and its visitors.

Mandan Parks and Recreation
 2600 46th Ave. SE
 701 751 6161
 Mandan, ND 58554
 mandanparks.com

- 3.00 Miles – Old Red Trail Section One
- 1.80 Miles – Old Red Trail Section Two
- 1.50 Miles – Lewis and Clark Trail
- 1.00 Miles – Sunset Park Walking Trail
- 2.00 Miles – Sunset Park Mtn. Bike Trail
- 2.90 Miles – 3rd Street to Fort Lincoln
- 1.40 Miles – 6th Ave. SE to Prairie West
- 2.60 Miles – Prairie West to Expressway
- 2.40 Miles – Missouri River Mountain Bike Trail
- 5.60 Miles – Missouri River Nature Trail
- .90 Miles – River Wood Trail

- All Seasons Arena
905 8th Avenue NW 751-6176
- Borden Harbor Park
3805 Sandpiper Trail
- Burlington Northern Park
4th Avenue NW & Main Street
- Dacotah Centennial Park
2500 Long Spur Trail
- Developers West
4109 39th Avenue NW
- Universal Playground/Eagles Park
100 14th Street NE
- Faris Field
8th Avenue & 6th Street SW
- Golf Course Maintenance
2709 Long Spur Trail
- H.A. Kautzmann Park
500 Lohstreter Road NW
- KC Park
801 3rd Avenue SW
- Kiwanis Park
201 3rd Street SW
- Legion Memorial Ball Park
501 3rd Street SW
- Legion Park
1111 10th Avenue SW
- Lions Park
1000 Division Street NW
- Mandan Aquatic Center
901 Division Street NW 751-2223
- Mandan Municipal Golf Course
1002 7th Street SW 751-6172
- Mandan Park District
2600 46th Avenue SE 751-6161
- Mandan Skate Park
901 Division Street NW
- Mandan Soccer Complex
1101 Redwing Drive SE
- Middle School Tennis Courts
2901 12th Avenue NW
- Park Shop
711 6th Avenue SW 751-6169
- Prairie West Golf Course
2709 Long Spur Trail 751-6171
- Raging Rivers Water Park
2600 46th Avenue SE 663-3393
- Robert M. Longfellow Veterans Memorial Park
2001 Pirates Loop SE
- Roughrider
Horseshoe Bend
- Dog Town Dog Park & Sitting Bull Park
8th Avenue SE & Hwy 1806
- Softball Complex
501 3rd Street SW
- South Side Tennis Courts
7th Avenue & 7th Street SW
- Spirit of Life
3rd Street SE
- Stargazer Park
1501 27th Street SE
- Starion Sports Complex
111 Old Red Trail NE
- Sunset Park
901 Division Street
- Teamster Park
4th-3rd Street NE
- Ventures
4407 Cortez Circle NW
- William Bauknecht Park
711 6th Avenue NW



Mandan Paved Recreational Trails



Mandan features over 30 miles of paved recreation trails for your enjoyment.

Our city section starts at either the Memorial or Expressway Bridges, intersects with 19th Street SE, and connects with Morton County trails. The trail then travels through some of the North Dakota's greatest historical scenery to Fort Abraham Lincoln State Park. The challenging paved recreation trail at the north side of Mandan begins at Boundary Road and continues along Old Red Trail until you reach 37th Street NW.

Missouri Valley Millennium Legacy Trail

Bismarck-Mandan received one of 52 national Millennium Legacy Trail designations for their Missouri Valley Millennium Trail. The cities were recognized for their efforts in developing the recreation trail system and connection between the two cities.

The Missouri Valley Millennium Legacy Trail connects the people of Bismarck and Mandan to historical, recreational, and cultural places along the Missouri River. These places include the Mandan Indian Village (Chief Looking's) at the Pioneer Park Overlook, Missouri River Greenway, Dakota Zoo, Prairie West Golf Course, Fort Lincoln Trolley, Sitting Bull Bridge interpretive area, The Post, Fort Abraham Lincoln State Park, Fort McKeen, On-A-Slant earthlodge and the Custer House.

Sunset Park Trail

Sunset Park, located just north of the Mandan Community Center, is a rough terrain trail that loops through the 80-acre park. This is one of just a few parks the District allows dogs to roam in, so it is very popular with the outdoors person. Mandan has an 18 hole, rolling hill Frisbee Golf course located at Sunset Park for your enjoyment. This challenging, rolling hill course is fun for everyone. The only equipment you need is your frisbee!

Missouri River Nature Area

The Missouri River Nature Trail, located east and south of the Archery Range, is a flat terrain trail filled with native river-bottom woodland. It has become a favorite of the mountain bikers who prefer a variety of terrains. Wildlife including an amazing number of birds make this area perfect for a long nature walk. The Mandan Park District, in conjunction with Morton County Parks and ND State Parks maintains a Cross-Country Ski area on this same trail during the winter months. To get to the trailhead just take the Twin City Drive exit (near Culver's restaurant) coming off the Mandan I-94 ramp. Continue on the Missouri Drive until you pass underneath the I-94 overpass. The trailhead is just to the right.

Trail Rules

- Walkers, joggers and bikers please keep to the right when using the trails.
- All dogs must be on a leash.
- Be aware of traffic approaching and behind you.
- Be aware of intersections and crossings.
- Please pick up your and your pet's litter.

FMI on Mandan's trails, visit: <https://mandanparks.com/parks-shelters/trails/>

